



Designed to drive down water, electrical and gas costs while improving productivity, E-Series large capacity washer-extractors deliver high-speed extract, an easy-to-install, freestanding design, unmatched durability and the ultimate in programmability!

EH090  
EH130  
EH255

**CONTINENTAL**  
GIRBAU®



## E-SERIES HIGH-PERFORMANCE WASHER-EXTRACTORS MAXIMIZING ENERGY EFFICIENCY & PRODUCTIVITY

*Designed to drive down utility costs while improving productivity, E-Series large-capacity, open-pocket washer-extractors in 90-, 130- and 255-pound capacities deliver high-speed extract, an easy-to-install, freestanding design, unmatched durability and the ultimate in programmability!*

### ZERO-IMPACT INSTALLATION

Constructed using a Multi-Directional Springs (MDS) system that absorbs 95 percent of all vibrations, E-Series Washers can be installed in unconventional locations, including areas with in-floor heat and above ground-level laundries—all with little or no floor preparation or facility improvement or waiting time for operation. Moreover, the freestanding design allows laundries to easily relocate these machines with zero impact on the facility.

### SUPER-SPEED EXTRACT

E-Series Washers quietly and gently reach extract speeds up to 387 G-force, about 250 G-force more than most hard-mount washers. The high-speed extraction removes more water from each load—reducing dry time, operating time, utility consumption and labor expense. By cutting dry time, damaging heat exposure and mechanical action are also reduced, resulting in less linen wear. Linen lasts longer and so do your dryers, which run fewer hours per day.

### EFFICIENCY UNCOMPROMISED

E-Series technology allows for superior wash quality using considerably less water than many competitive washers. E-Series are designed without a sump – a water containment area at the base of the washer. This saves up to 3 gallons of water with each fill when compared to machines equipped with an outer tub sump. Less water used equates to lower water-heating costs and reduced chemical usage. E-Series' AquaFall™ system further enhances efficiency. Water enters the washer drum via holes in the drum lifters. As the drum turns, lifters release water from above, enabling superior load saturation, chemical penetration and rinsing. Continental's Aqua-Mixer™ system also improves wash action by mixing hot and cold water to achieve precise bath temperatures—minimizing hot water consumption.

### PROVEN CONSTRUCTION, DURABILITY & LONGEVITY

E-Series Washers feature durable AISI-304 stainless steel inner and outer drums designed for constant use. The front, side and top panels are constructed of steel and coated with Continental's Titan Steel Finish™ for superior appearance and corrosion resistance. The sealing system, consisting of one axial and one radial seal fitted on a chromed bushing with a large moisture drainage chamber between, is guaranteed for years of constant use. No wonder E-Series are backed by a solid manufacturer's warranty!

### ERGONOMIC AND EASY TO MAINTAIN

Ergonomics and safety were driving factors in the design of E-Series Washers. An optional tilting system is available to assist operators in the loading/unloading process. The machines also feature rounded corners to avoid operator bumps and bruises and to make the machine easier to clean. To reduce maintenance time and associated costs, all components requiring regular maintenance are easily accessible. The top panel of the washer can be quickly removed, the drain is easily accessible and the transmission system can be serviced by simply removing the rear panel of the washer. Bearings are lubricated for a lifetime, the poly-v belt needn't be tightened and bearings and seals are easily replaced without removing the washer drum.



MDS system



AquaFall™ system



quality components



superior fit and finish



### OPTIMUM DOSING FOR THE BEST WASH RESULTS

To guarantee optimum cleaning for every type of load, E-Series Washers feature 12 standard chemical injection signals with programmable time dosing and flush flexibility. Chemicals are diluted with water before being introduced into the washer drum—preventing direct chemical-to-linen contact that can result in linen damage. The Intelli Control also supports independent flush control of its side-mounted 4-compartment chemical hopper and signal delay for central chemical supply systems.

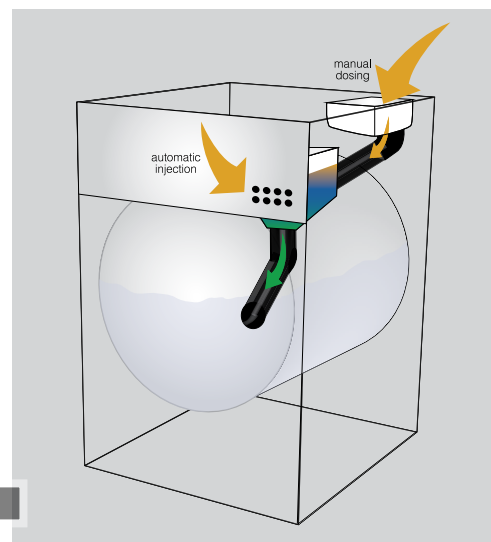
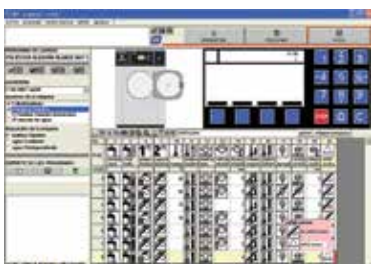
### INTELLIGENT (INTELI) CONTROL—REDEFINING FLEXIBILITY

Continental's most flexible and dynamic control ever, the Intelli allows complete control of every conditional aspect of the wash process! With 20 pre-programmed cycles and up to 79 individually modifiable cycles, users can control water temperature (by degree), wash rotation speed and duration, five on/off wash rotation combinations, multiple water levels, bath cool-down (by degree) and six programmable extract speeds. The Intelli is so flexible, it can be programmed for a wash cycle of as little as three minutes up to an extended program lasting for hours or days. Optional overnight soak and delayed start are also standard features

Despite advanced technology, the control couldn't be simpler to use. Once the programs are set, operators simply select a program and push start for the optimum wash variables given the load type. The LCD display gives users a visual status of the cycle and current bath temperatures using universally-understood icons that reduce problems associated with language barriers.

### INTELI MANAGER TOOL

The control can be programmed manually on the washer or using Continental's exclusive Intelli Manager Tool (IMTx). IMTx is a software system that gives users the ability to program their washer via a personal computer. IMTx saves valuable time when configuring multiple programs on one machine or when programming multiple machines. Users can view multiple programs simultaneously using IMTx, so it is easy to compare, copy and modify each of the parameters within separate programs. Once saved, the programs can be downloaded to the IMTx Smart Card, which can then be applied to one machine or a series of machines in a laundry using the smart-card interface. In addition, the programs can be shared electronically with other IMTx users, making programming easy regardless of the washers geographic location. IMTx also allows users to reverse the process by uploading a single machine's programming parameters onto a smart card. That information can then be used to program other machines, or it can be downloaded onto the IMTx and e-mailed to another account. Finally, the IMTx also features a programming simulator, perfect for control operation training with staff.



dosing system



Inteli Control



IMTx Smart Card

**DIMENSIONS & WEIGHTS**

	<b>EH090</b>	<b>EH130 stat</b>	<b>EH130 tilt</b>	<b>EH255 stat</b>	<b>EH255 tilt</b>
Capacity <i>lbs (kg)</i>	90 (39.5)	130 (57)	130 (57)	255 (110)	255 (110)
Cylinder Diameter <i>inch (mm)</i>	35.4 (900)	42.5 (1080)	42.5 (1080)	51.6 (1310)	51.6 (1310)
Cylinder Depth <i>inch (mm)</i>	24.4 (621)	24.4 (621)	24.4 (621)	32.1 (816)	32.1 (816)
Cylinder Volume <i>cu ft (dm<sup>3</sup>)</i>	13.9 (395)	20.1 (569)	20.1 (569)	38.8 (1100)	38.8 (1100)
Net Weight <i>lbs (kg)</i>	3106 (1409)	4260 (1932)	4965 (2252)	8566 (3885)	9343 (4238)
Crated Weight <i>lbs (kg)</i>	3405 (1544)	4636 (2103)	5549 (2517)	9056 (4108)	10098 (4580)
Crated Weight—Tilt Assembly <i>lbs (kg)</i>	—	—	913 (414)	—	1042 (472)
Machine Width <i>inch (mm)</i>	54.7 (1390)	61.8 (1570)	65 (1650)	69.7 (1770)	72.4 (1838)
Machine Depth <i>inch (mm)</i>	57.3 (1455)	58.8 (1493)	63.5 (1613)	76.3 (1939)	81 (2058)
Machine Height <i>inch (mm)</i>	70.6 (1794)	75.8 (1925)	83.3 (2115)	81.4 (2068)	88.8 (2256)
Door Opening <i>inch (mm)</i>	22 (558)	22 (558)	22 (558)	26.9 (684)	26.9 (684)
Floor to Door <i>inch (mm)</i>	25.8 (655)	32 (812)	39.4 (1002)	31.8 (807)	39.2 (995)
Shipping Dimensions <i>inch (mm) (WxDxH)</i>	59.8 x 62.2 x 79.9 (1520 x 1580 x 2030)	66.5 x 64.8 x 85 (1690 x 1646 x 2160)	66.5 x 64.8 x 85 (1690 x 1646 x 2160)	76.8 x 83.5 x 88.4 (1950 x 2120 x 2245)	76.8 x 83.5 x 88.4 (1950 x 2120 x 2245)
Shipping Dimensions—Tilt Assembly <i>inch (mm) (WxDxH)</i>	—	—	42.5 x 78 x 27.6 (1080 x 1980 x 700)	—	42.5 x 78 x 27.6 (1080 x 1980 x 700)

**GENERAL**

Washing Speed <i>rpm</i>	19/26/33/40	18/24/30/36	18/24/30/36	17/22/27/32	17/22/27/32
Spin Speed <i>rpm</i>	40/79/300/490/680/870	36/72/275/450/625/800	36/72/275/450/625/800	32/66/250/405/565/725	32/66/250/405/565/725
G-force	0.81/3.15/45/121/ 233/381	0.78/3.14/46/122/ 236/387	0.78/3.14/46/122/ 236/387	0.75/3.2/46/120/ 234/386	0.75/3.2/46/120/ 234/386

**CONNECTIONS**

Drain Diameter <i>inch (mm)</i>	3 (76)	3 (76)	3 (76)	5 (125)	5 (125)
Water Inlets <i>inch (mm)</i>	1 (25.4)	1 (25.4)	1 (25.4)	2 (51)	2 (51)
Recommended Water Pressure <i>PSI (bar)</i>	30-60 (2-4)	30-60 (2-4)	30-60 (2-4)	30-60 (2-4)	30-60 (2-4)
Water Flow <i>gal/min (l/min)</i>	26 (100)	26 (100)	26 (100)	58 (220)	58 (220)
Steam Connection <i>inch (mm)</i>	3/4 (19)	3/4 (19)	3/4 (19)	1 (25.4)	1 (25.4)
Steam Pressure <i>PSI (bar)</i>	29-87 (2-6)	29-87 (2-6)	29-87 (2-6)	29-60 (2-4)	29-60 (2-4)
Steam Flow <i>lbs/h (kg/h)</i>	397 (180)	397 (180)	397 (180)	397 (180)	397 (180)
Motor Power <i>kW</i>	4.8	7.3	7.3	11	11
Electric Heating Power <i>kW (optional)</i>	208/60/3 240/60/3	18.6 24.2	27.9 35.8	—	—

\* Product specifications are subject to change without notice. For the most current and complete technical specifications, architectural line drawings and warranty information, please visit our Website at [www.continentalgirbau.com](http://www.continentalgirbau.com)

**ENVIRONMENTALLY FRIENDLY**

Girbau S.A. laundry products meet rigorous environmental and safety standards established by the International Organization for Standardization (ISO), including ISO9001 and ISO14001. With the utmost concern for the environment, the E-Series Washer-extractors were designed to conserve the earth's natural resources. Not only do they use less water, they reduce gas and electricity usage by utilizing high-speed extraction to remove significantly more water from each load during extract—slashing dry time and resulting gas consumption. Developed to reduce noise pollution as well, E-Series Washers are extremely quiet thanks to inverter-controlled motors.

Ever focused on laundry efficiency, Continental Girbau Inc., the North American subsidiary of Girbau S.A., is a member of the U.S. Green Building Council (USGBC), a 501(c)(3) nonprofit that developed the Leadership in Energy and Environmental Design (LEED) Green Building Rating System.



**CONTINENTALCARE™**  
BUY WITH COMPLETE CONFIDENCE

**DISTRIBUTED BY:** EMS Detergent Services  
2865 Stoner CT  
North Liberty, IA 52317  
319-665-2216  
DSM Office- 515-244-1788



[www.continentalgirbau.com](http://www.continentalgirbau.com) • 800-256-1073  
2500 State Road 44 • Oshkosh, WI 54904 • 920-231-8222 • Fax 920-231-4666